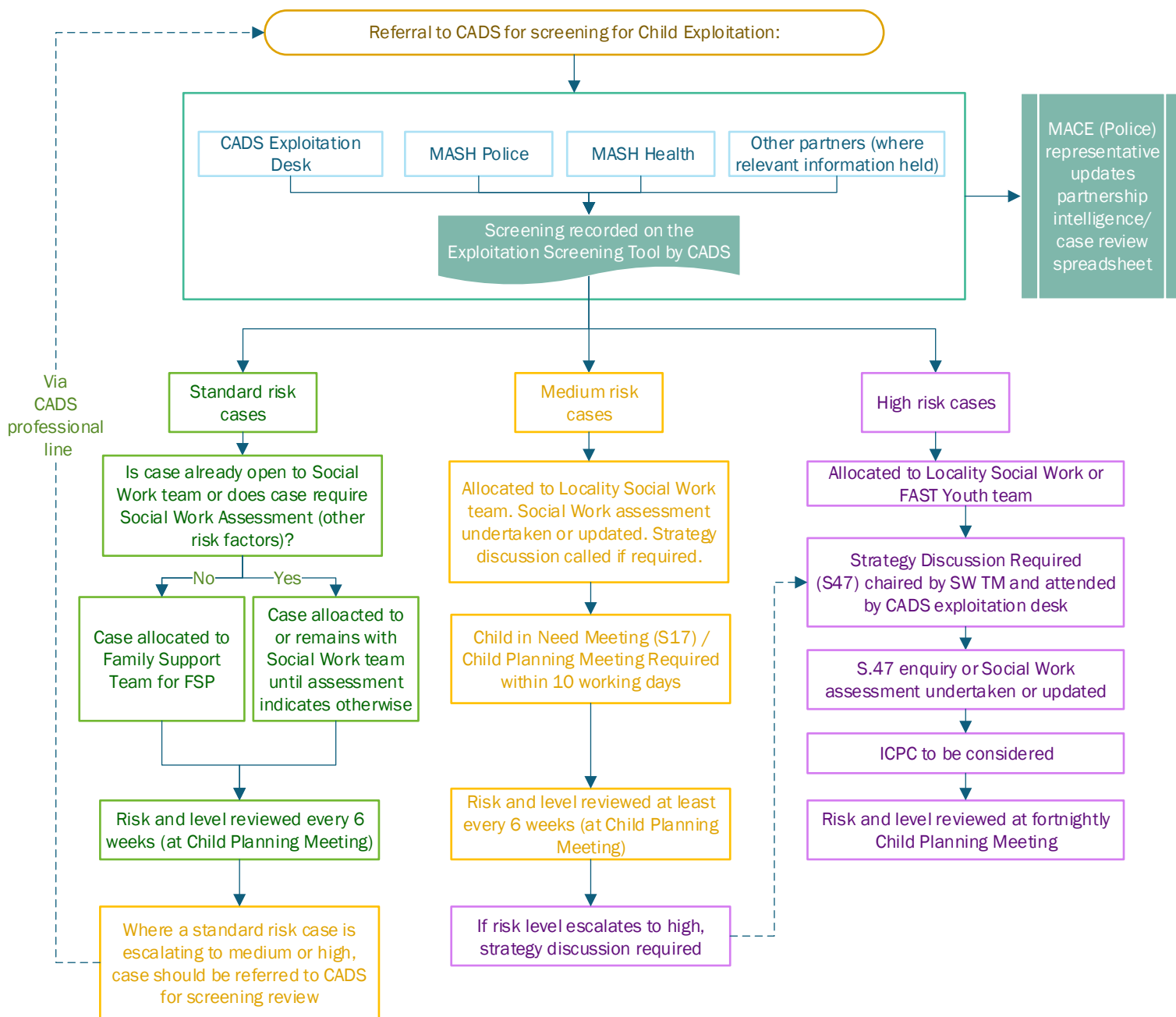


## Multi-agency Child Exploitation Screening Process



- Notes:**
- The case-holding practitioner retains overall ownership of the case at all risk levels. Medium and high risk cases must remain open to social work teams. They will work with the MACE team, family & professional network.
  - Reviews of risk level should be recorded **by the case-holding practitioner** on the Exploitation Screening Tool (Review) in the LCS CSE workspace. **The category of risk box must also be updated.**
  - Consideration should be given as to whether a National Referral Mechanism application is appropriate in all medium and high risk cases.
  - Where a Social Work case is stepped down to Family Support but the risk level remains at standard, the CSE episode must remain open in LCS.
  - Where a case is closing to Children's Services completely, the CSE episode should be ended in the CSE workspace
  - In cases of radicalisation, follow PREVENT guidelines.

- Other support available:**
- The following are available to provide additional support with exploitation cases:
- Targeted Youth Support Service (standard & medium risk)
  - Youth FAST team (high risk)
  - St. Giles (1-1 support for medium & high risk cases)
  - Rose Project (Support for medium & high risk CSE cases)
  - New Roads (including RAISE meetings)
  - Locality Mapping Meetings