

Strategy discussion to agree pathway for paediatric safeguarding medical examination

Community Paediatrics (9am-5pm)

Central 01603 508969

West 01553 668601

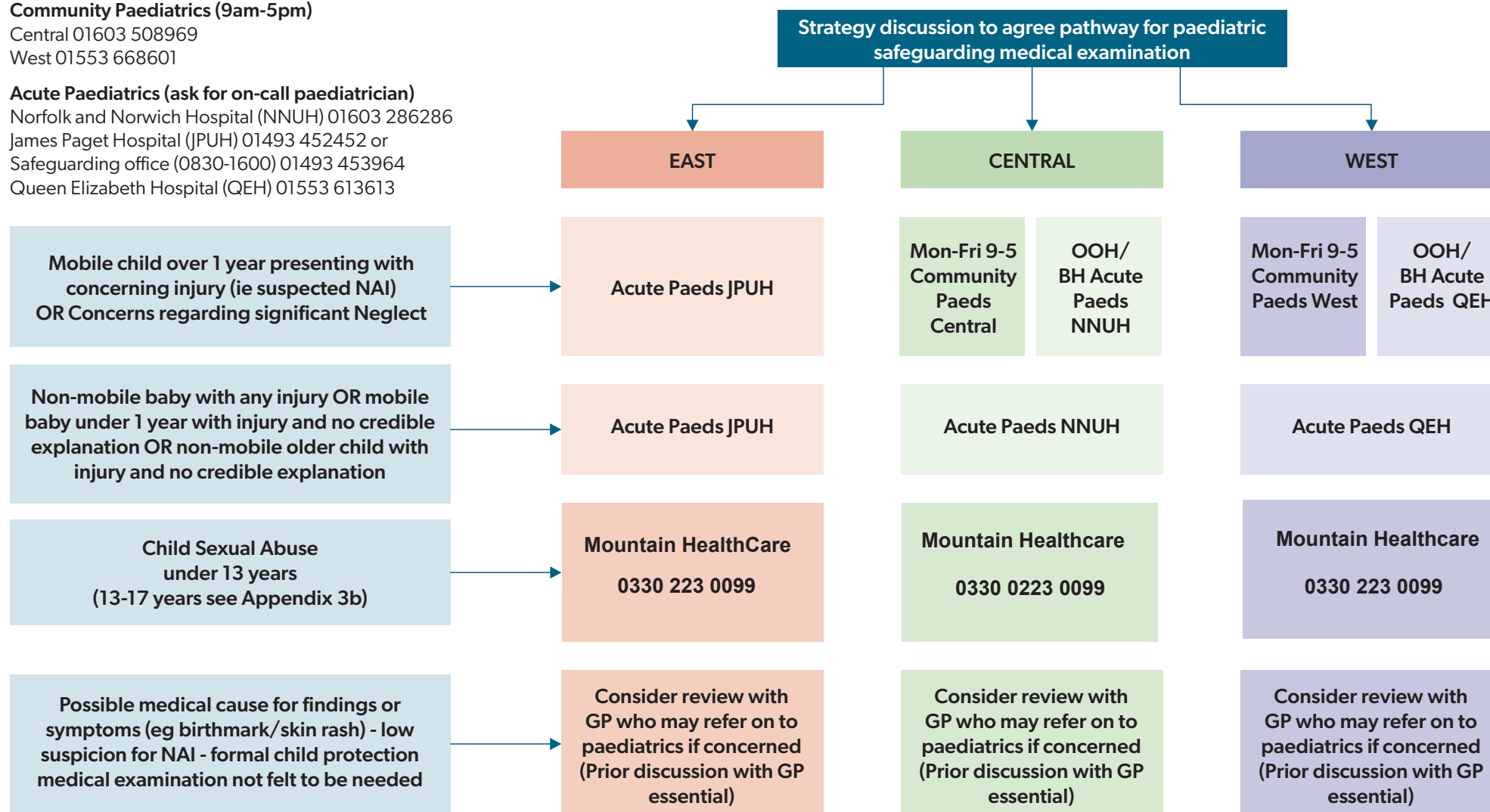
Acute Paediatrics (ask for on-call paediatrician)

Norfolk and Norwich Hospital (NNUH) 01603 286286

James Paget Hospital (JPUH) 01493 452452 or

Safeguarding office (0830-1600) 01493 453964

Queen Elizabeth Hospital (QEH) 01553 613613



A non-mobile baby is a baby who is not yet crawling, bottom shuffling, pulling to stand, cruising or walking. This includes babies who can roll but cannot crawl.