

# Safeguarding Learning and Development Opportunities

**Sharon Moore**  
**NSCP Workforce Development**  
**Officer**  
**and**  
**Gemma Hampton**  
**Safer Programme Co-Ordinator**



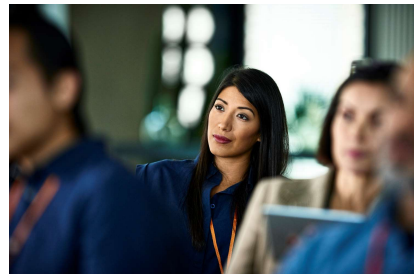
Norfolk Safeguarding  
Children Partnership

1

## Who can attend?

NSCP Training is open to anyone working with children and young people and their families in Norfolk.

This includes those working for statutory, independent and voluntary sector organisations.



Norfolk Safeguarding  
Children Partnership

2

## What training do we offer?

The NSCP invests a significant proportion of its budget to commissioning an external training provider to deliver multi-agency training:

- Face to face
- Online
  - Full day
  - Two x half days



Norfolk Safeguarding  
Children Partnership

3

## What commissioned training do we offer?

- Neglect
- Vulnerable Adolescents
- Trauma Informed Practice
- Working with Families
- Domestic Abuse
- Assessing, Managing & Holding Risk
- Emotional Wellbeing
- Poverty (under development)
- Child Sexual Abuse
- Children with Disabilities / Complex Health Needs
- Professional Curiosity and Challenge
- Reflective Supervision Skills
- Voice of the Child
- Serious Youth Violence (under development)



Norfolk Safeguarding  
Children Partnership

4

## What training do we offer?

The commissioned training programme is supplemented by an extensive programme of courses offered by partners including:

- Signs of Safety/Family Networking
- Child Protection Conferences
- Early Help Assessment and Planning
- Gypsy Roma Traveller Cultural Awareness
- Substance Misuse in the Family
- The role of the Local Authority Designated Officer
- Protecting Babies
- Parental Conflict
- Working with Children's Services
- An introduction to multi-agency working for new practitioners



Norfolk Safeguarding  
Children Partnership

5

## What other learning opportunities do we offer?

- Adultification and Gangs and Serious Youth Violence training – Autumn/Winter 2024/25
- Serious Youth Violence Conference – Spring 2025
- Best Practice Events
  - Transitions
  - Safeguarding Children Trainers



Norfolk Safeguarding  
Children Partnership

6

## How many people do we train?

- In the 2023-2024 training year NSCP training events were attended on over **4000** occasions



7

## Learning Support for Neglect Champions?

- Neglect Champions' Forums
- Norfolk Graded Care Profile
- Questions for Success
- Neglect Conference
- Neglect Toolkit Workshops
- Oral Health and Neglect
- Reflective Spaces
  - Emotional Impact of Working with Neglect
  - Poverty and Neglect
  - Root Causes



Norfolk Safeguarding  
Children Partnership

8

## Want to become a Neglect Champion?

<https://forms.office.com/r/XmfVFtbSUi>



Norfolk Safeguarding  
Children Partnership

9

## How do I book?

Most of our training is bookable through our online booking system: [NSCP Training page](#) | [Norfolk Safeguarding Children Partnership](#) | [PWCC \(norfolklscp.org.uk\)](#)

Education staff book through the S4S system.



Norfolk Safeguarding  
Children Partnership

10

# The Safer Programme

Keeping Children and Young People Safer in Norfolk



11

## What is The Safer Programme?

We are part of the Norfolk Safeguarding Children Partnership.

Safer has been supporting members since 2010.

Safer is unique to Norfolk, with no other county offering the same level of guidance and support to members.

Safer provides advice, information and training on all aspects of safeguarding children.




12

## Who can join The Safer Programme?

Organisations or groups from the voluntary and community sector, the statutory sector, or the private sector.

*Current members include:*

- Youth Organisations
- Charities
- Childcare Settings including Childminders
- Sport and Leisure
- Parent and Child Groups
- District Councils
- Theatre and Arts
- Community Projects
- Tourism
- Housing Associations
- Health and Social Care
- Therapy Providers



13

## Why should you join Safer?

- The safeguarding landscape is continuously changing
- Organisations need current and relevant knowledge to be responsive and adaptable to keep children safe.
- You are on the frontline when it comes to safeguarding, and it is more important than ever to stay alert as to what is happening to children in your local area.
- You do one of the most rewarding, but at the same time hardest jobs and Safer's role is to make sure you are not alone.
- Safer can provide you with that listening ear or sounding board.



14

## Benefits of Joining The Safer Programme

- Advice and guidance.
- Free monthly safeguarding workshops.
- A yearly review of your safeguarding policy.
- A range of policy templates.
- 2 free training places on our Introduction Level Courses every three years and 20% off the Core Programme and Safer Recruitment.
- The chance to achieve The Safer Certificate.
- Monthly email newsletter.
- Access to our Facebook Group.
- £10 off per course place for Norfolk Safeguarding Children Partnership multi-agency courses.



15

## Annual Membership Charges

- For those with an annual income of under £250,000- membership is **£35**
- For those with an annual income of £250,000-£500,000-membership is **£45**
- For those with an annual income of more than £500,000-membership is **£55**.



16



## Safeguarding Training

- We offer face to face and online courses via Zoom.
- You can attend courses even if you are not a Safer Member, but Members receive a discount.
- Courses can be booked via the website.
- We can advise you on which level of training would best suit your needs.
- We offer dedicated sessions, where training can be delivered at your organisation.




17

## Safeguarding Training Courses

- Introduction to Safeguarding Children
- Introduction to Online Safety
- Core Programme
- Designated Safeguarding Person
- Safeguarding Lead Practitioner /SLP Refresher
- Recognising and Responding
- Safer Recruitment
- Safeguarding for Early Years Committees



18

## Safer Trainers

Our Trainers have a wealth of experience and knowledge. They are from a varied background including: Social Work, Police, Foster Care, and Early Years.

“It is always nice to hear from people who have worked in different fields and have extensive firsthand knowledge of these subjects”.

“The tutor was very informative with sharing her knowledge and answering any questions we had. Also very approachable making us feel comfortable when discussing”.

“Our tutor was excellent, and her knowledge and expertise shone through”.



19

## Safer Member Testimonials

We are very grateful for the wide range of training that Managers and Youth Workers have attended, delivered in a very professional and enjoyable manner, and the support and guidance we have received for writing and reviewing our Safeguarding policies.

*Harry Town-Director - MTM Youth Services CIC*

Communication between Safer was outstanding. Gemma was great in getting my policies and procedures back to me quickly. I can strongly recommend to every setting to join Safer, there is no negative point of the whole process it's easy and straight forward and the price is well worth all the benefits you receive.

*Tina Grinsell-Manager & SLP of Swaffham Pre-school.*



20

## Reflection Time

- How does your organisation keep updated on changes to safeguarding practices in Norfolk?
- When was your safeguarding policy last reviewed externally?
- How do you ensure those working in your organisation are suitable to work with children?
- Who informs your organisation of changes to national legislation and guidance?
- Where do you access yearly safeguarding CPD for staff?
- Who can offer you support and guidance on sharing concerns with CADS and the LADO?



21

## Find out more

Our website contains more information, including how to become a Member:

<https://norfolklscp.org.uk/safer>

You can also email us at [safer@norfolk.gov.uk](mailto:safer@norfolk.gov.uk)



22